


5-8 Mobile Phone Viewing


DVR system allows user to view live streaming via iPhone, Android and other 3G mobile phone.

5-8-1 Install Secure EYE App



1. Select APP store 
2. Search for Secure EYE App
3. Install Secure EYE App
4. Select Secure EYE icon 

5-8-2 Execute Secure EYE software

1) Select Secure EYE  App.

2) Select Add Server to add DVR IP address.

Title: Name that you want to associate with the DVR server.

IP address: IP address(example : 192.168.1.110) or a DNS name(example : 12345.dyndns.com).

Port: Port number(watch port in DVR setup).

Username: Username(default is "admin").

Password: User password.


※When you finish, tap the "Save" button.





3) Go ahead and tap the DVR server item in Addressbook table when you register DVR server. The app will show "loading circle icon" as below.

※Until it received DVR channel data, it takes a few seconds(it depends on network environment. 3G will be longer than Wi-Fi)



4)  you can change channel and division mode.

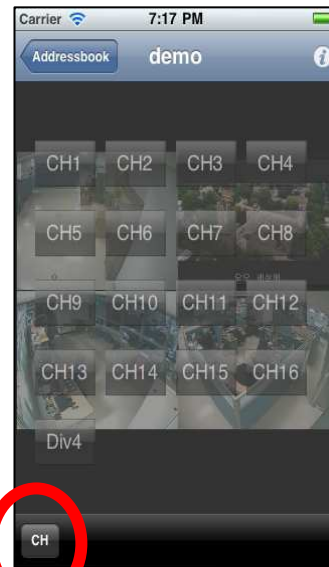
 capture 1 channel image in iPhone's photo album menu

 This button makes you can control PTZ camera



5-8-3 Function

- 1) **CH** - If you tap this button, sliding view will appear in live view and you can change channel and division mode. Max channel is 16, and division type is 1 channel mode, 4 channel mode, and 16 channel mode. If you finish change channel or division, tap "CH" button in bottom bar again.



- 2) **Save** - "Save" button capture 1 channel image. If you capture image by tapping "Save" button, you can find image file in iPhone's photo album menu.

- 3) **PTZ** - "PTZ" button makes you can control PTZ camera.

If camera type of the channel is PTZ, the third button in the bottom bar will be named "PTZ".

Otherwise, "Zoom". Every PTZ functions are controlled by your touch. You can also control zoom-in, zoom-out, focus-in, focus-out functions by tapping buttons.



- Pan/Tilt -

Pan/Tilt functions are controlled by single touch directionally. The app. will show the arrow in the screen as below.

- Zoom-In/Out -

Zoom-in/out function is controlled by multi touch from inside to outside or from outside to inside. The app. will show "+" icon in Zoom-in or "-" icon in Zoom-Out in the screen as below.

If camera type is not pan-tilt, you can control digital zoom function.

Every Digital Zoom function is controlled by your touch. Digital Zoom-in function is controlled by multi touch from inside to outside.

Digital Zoom-out function is controlled by multi touch from outside to inside.

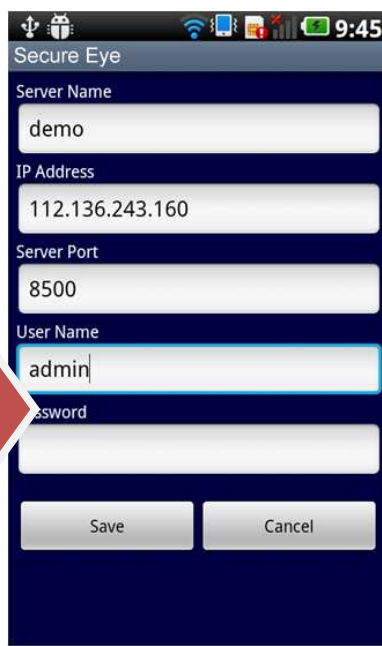
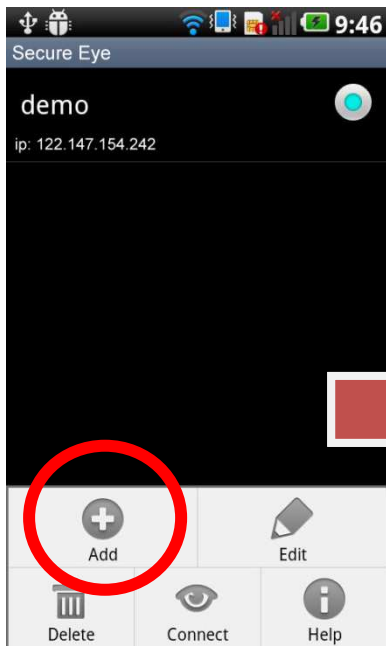
You can also control Digital zoom-in and Digital zoom-out functions by tapping "+" and "-" buttons.



5-8-4 Install Android's Secure EYE

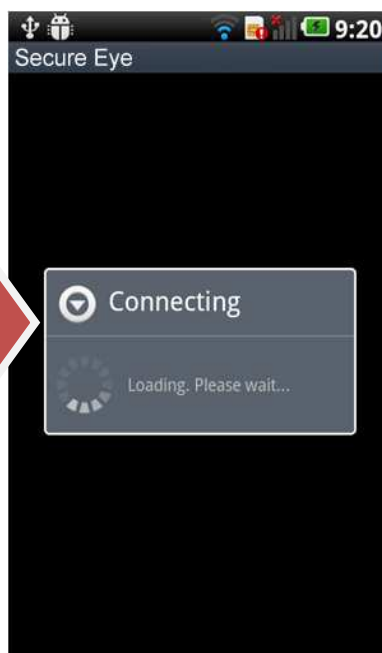
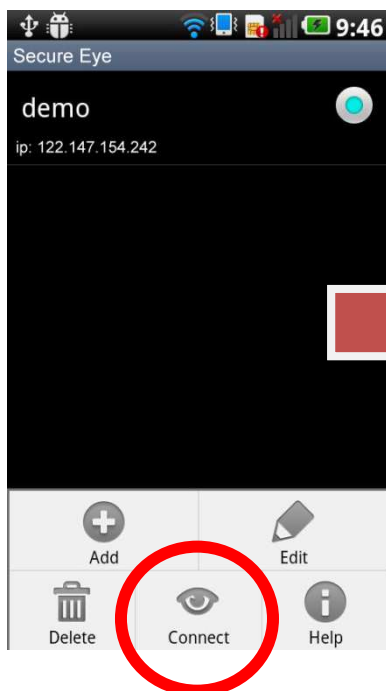
1. Select Android MARKET 
2. Search for Secure EYE App
3. Install Secure EYE to your mobile phone.
4. Select Secure EYE icon 

5-8-5 Execute Secure EYE software



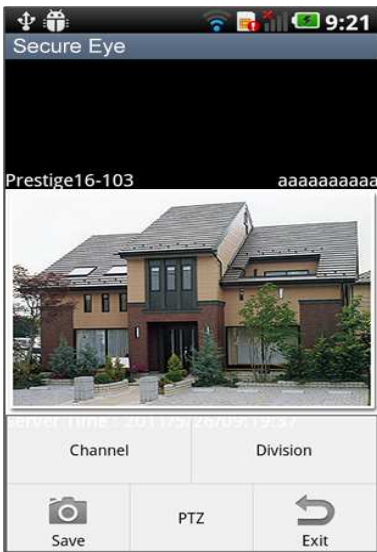
1. **Add:** Add Server to add DVR IP address.
2. **Edit:** Modifies the information of the selected DVR Server.
3. **Delete:** Delete the selected item.
4. **Connect:** Connect the selected DVR.
5. **Help:** Online manual.

Tap the DVR server item and select the **Connect** in menu when you register DVR server. The app. will show "loading, please wait"



**** Wait Until it receives DVR channel data, it will take a few seconds depending on the network environment. 3G will take a longer time than Wi-Fi.**

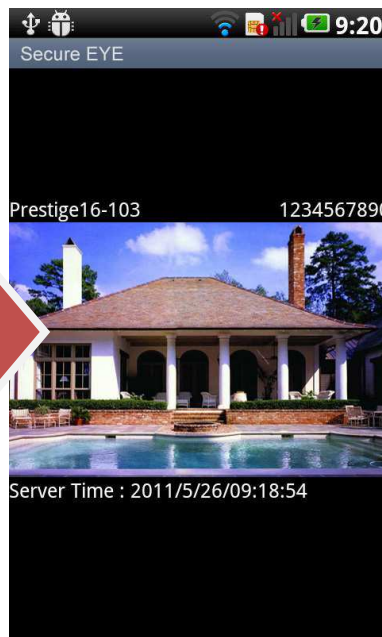
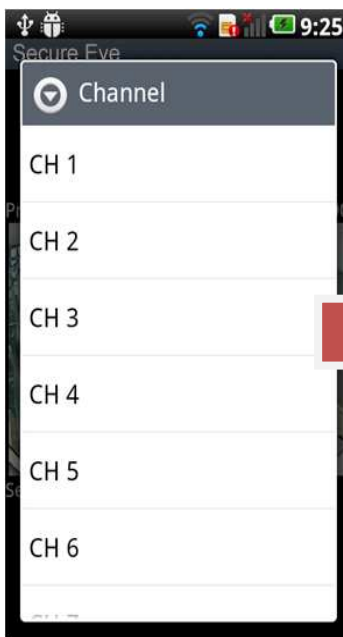
5-8-6 Function



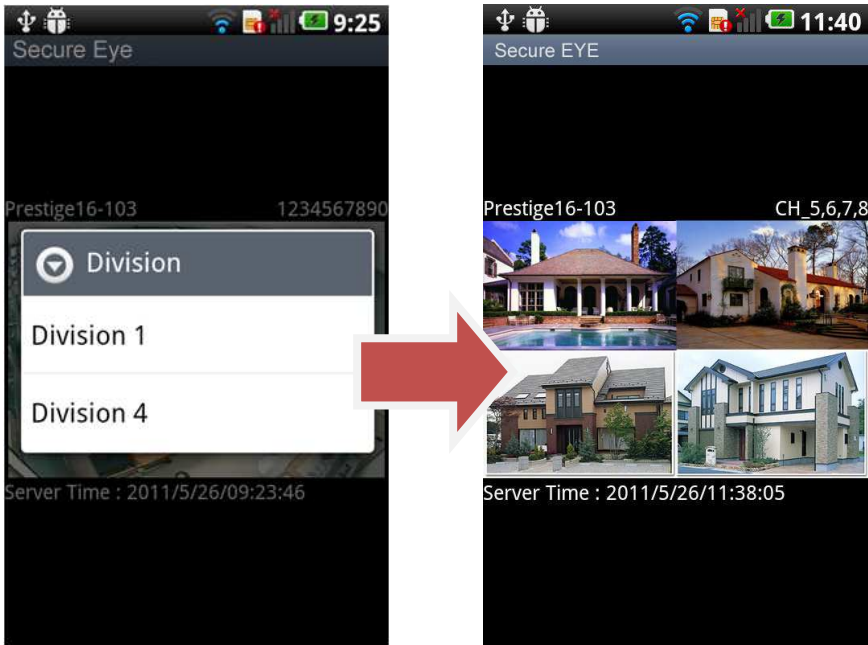
1. **Channel:** If you select these buttons, sliding view will appear in live view so that you can change the channel. (Max channel is 16)
2. **Division:** Division type is 1 and 4 division mode
3. **Save:** captures current image.
4. **PTZ:** The "PTZ" button allows you to control PTZ camera.
5. **Exit:** Return to main menu.

5-8-7 功能介紹

1) **Channel** –If you select these buttons, sliding view will appear in live view so that you can change the channel. (Max channel is 16)



2) **Division** - Division type is 1 and 4 division mode.



3) **Save** - "Save" button captures current image. If you capture an image by tapping "Save" button, you can find the image file in your phone's Gallery menu.



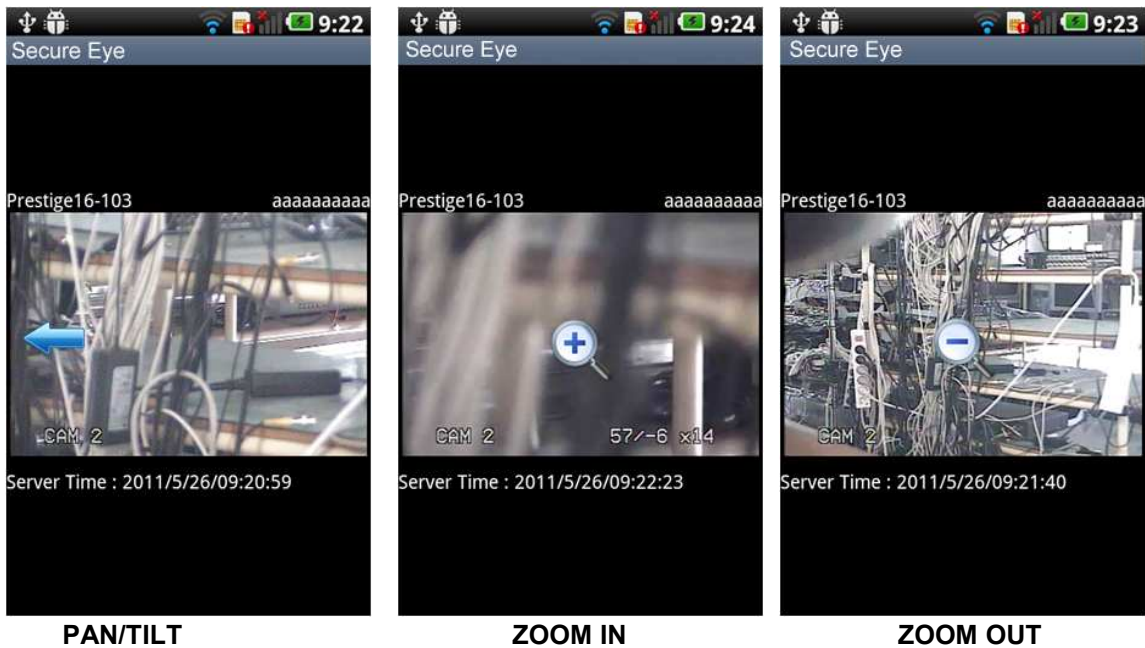
4) **PTZ** - The "PTZ" button allows you to control PTZ camera

If the camera type of the channel is PTZ, the fourth button on the bottom bar will be named "PTZ".

Otherwise, "Zoom".

Every PTZ function is controlled by touch. You can also control zoom-in, zoom-out, focus-in, focus-out functions by tapping menu buttons.

If you tap the "Exit" button in "PTZ" mode or "Zoom" mode, channel mode will be changed to Channel-switching mode. There you can change channel by touch –to-scroll in the left or right direction.



- Pan/Tilt -

Pan/Tilt functions are controlled by a single touch directionally. The app. will show the arrow on the screen as below.

- Zoom-In/Out -

The Zoom-in/out function is controlled by multi touch from inside to outside or from outside to inside. The app. will show "+" icon in Zoom-in mode or a "-" icon in Zoom-Out mode on the screen as below.

If the camera type is not pan-tilt, you can control the Digital zoom function.

supported functions are as below.

- Digital Zoom-in

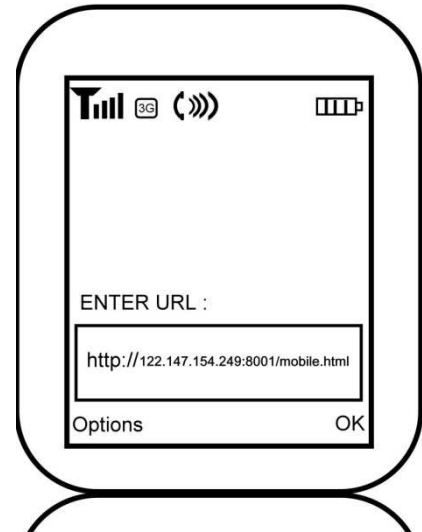
- Digital Zoom-out

Every Digital Zoom function is controlled by your touch. Digital Zoom-in function is controlled by multi touch from inside to outside.

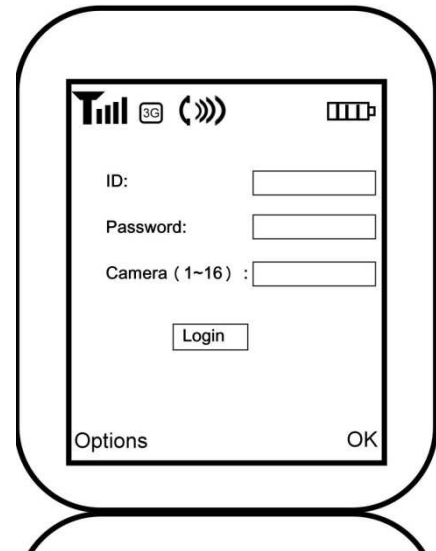
Digital Zoom-out function is controlled by multi-touch from outside to inside.

5-8-8 Other 3G mobile phone how to viewing ?

1. Enter DVR IP address on the mobile phone browser with **http://DVR ip address :port /mobile.html** format.
For example:<http://122.147.154.249:8001/mobile.html>
, which **8001** is referred to DVR web port



2. Enter DVR system ID and Password. Select camera channel and hit "Login".



3. Please allow 3~5 second for Mobile phone to buffer the image.



NOTE:

1. Mobile phone image download speed is depend on mobile carrier download bandwidth and signal performance.
2. The maximum download speed is 1 FPS